



OPENFABRICS
ALLIANCE

Expanding the OFA

A users' guide to this year's workshop



#OFADevWorkshop

Administrivia

- Wi-Fi password is “ofa”
- John Lee still needs speaker presentations
- Sarah controls the meeting room – see her for scheduling and for the key
- Any questions?

Welcome to the 2015 workshop

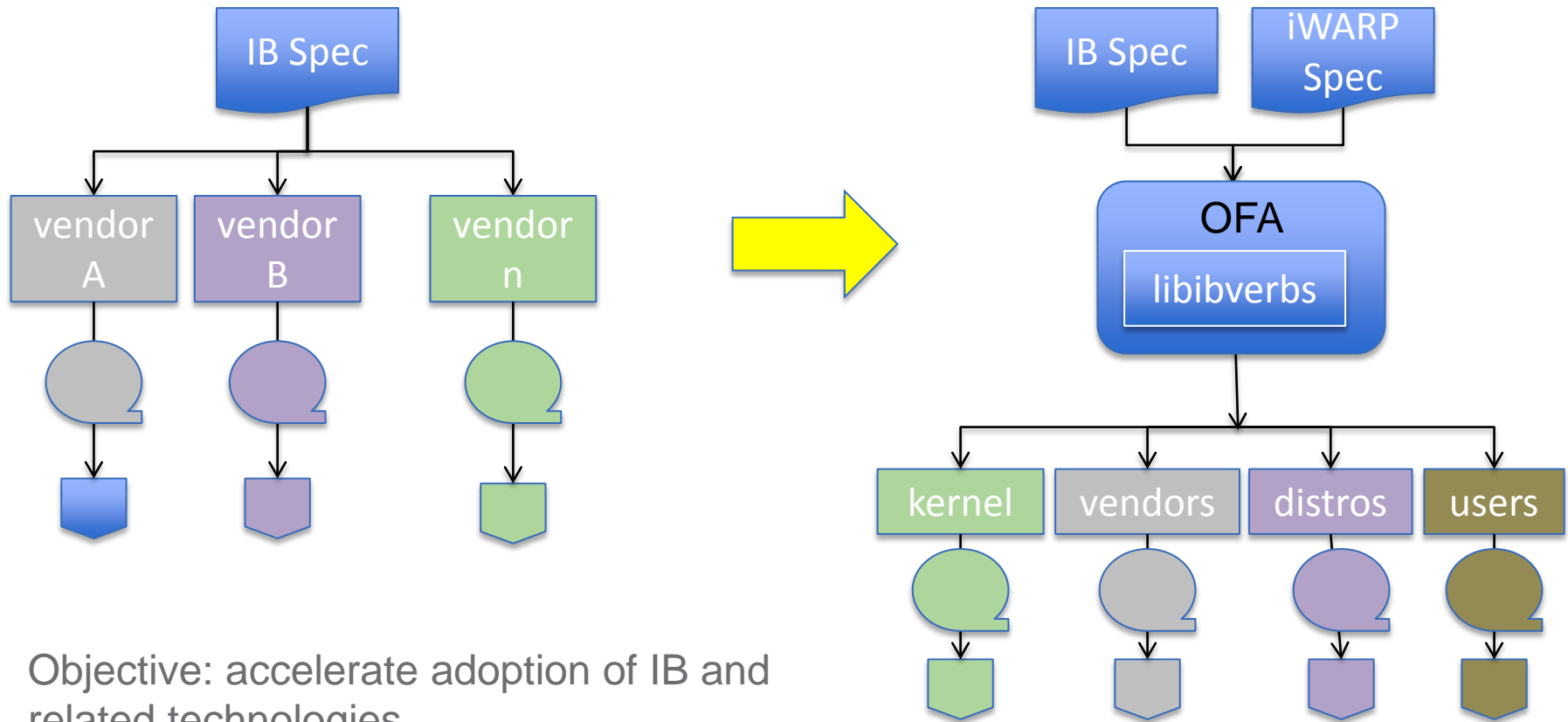


Some trends to look for in the workshop. Look for:

1. Discussion on recent efforts in the OFA to develop new I/O technology
 - OFI WG, OFV WG
2. Sessions driven by providers of, or advocates for, key technologies that will help drive our direction
 - Non-volatile memory (in all its forms)
 - SoCs
3. Look for examples of efforts to (re-)engage with key stakeholders
 - MPI community
 - National Labs Forum

Direction check on Wednesday as part of plotting the course of the organization for the next year

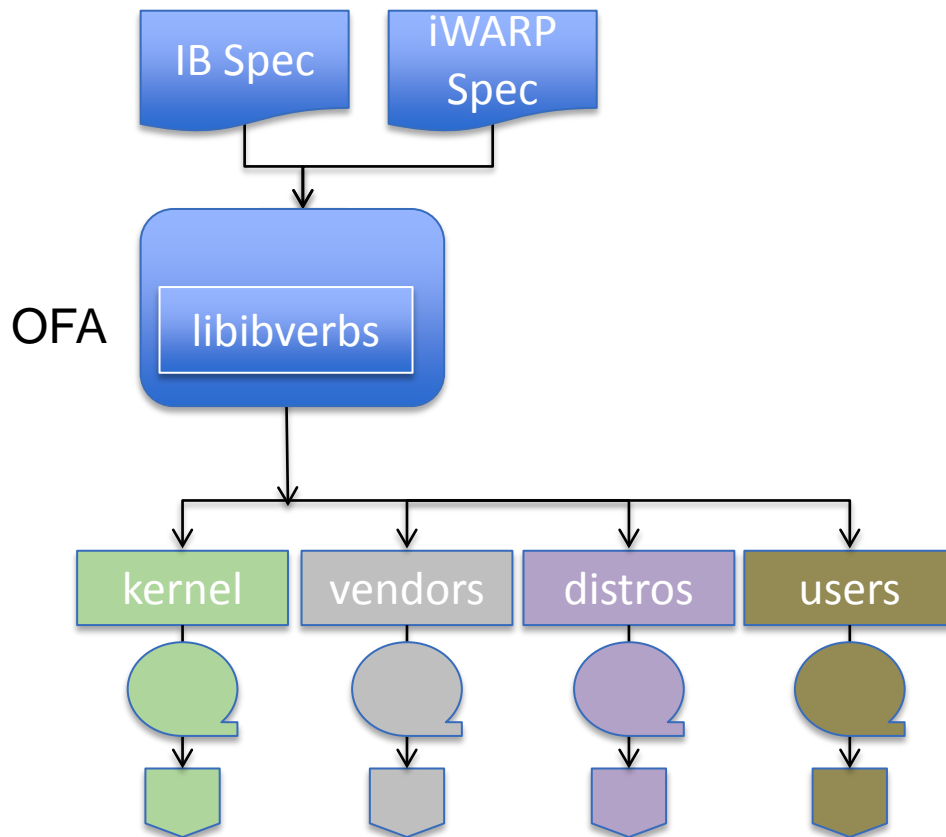
2000 – OpenIB & how it's evolving



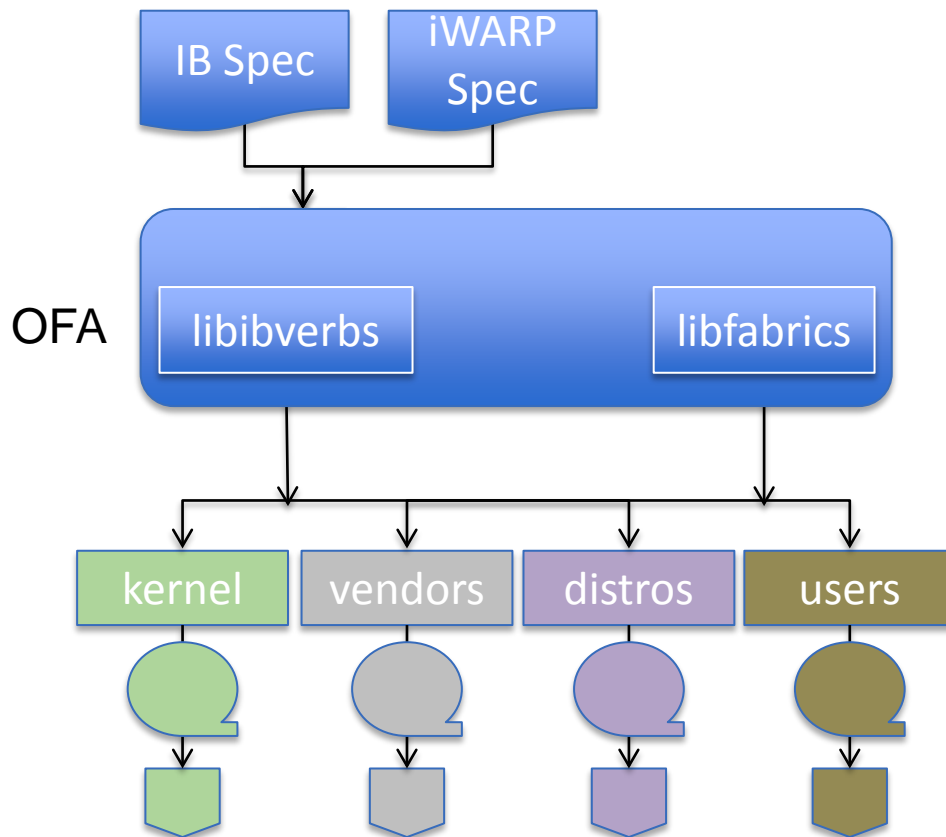
Objective: accelerate adoption of IB and related technologies.

The OFA was mainly an enabling body.

An interesting development



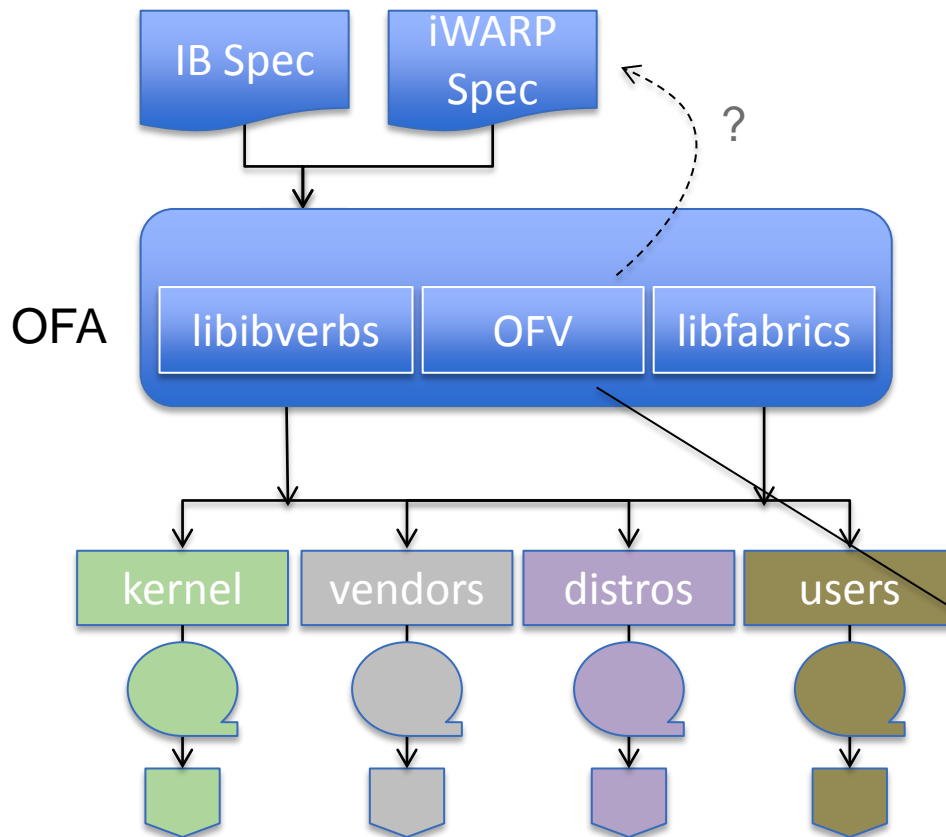
An interesting development



For the 1st time, the OFA is developing new technology, *without* an underlying industry standard specification

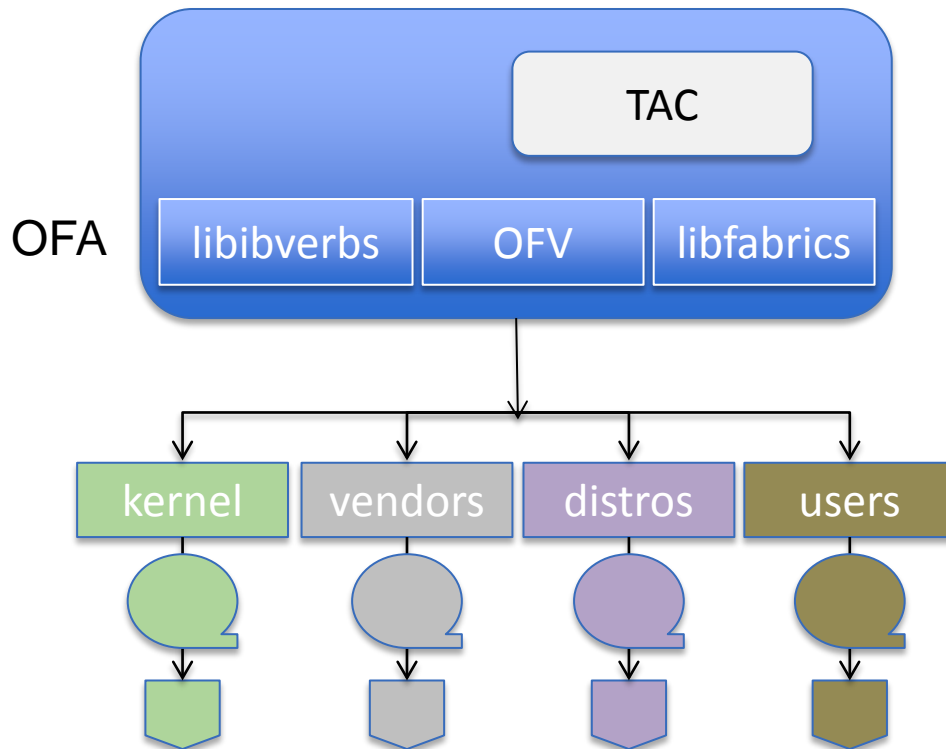
Pure, requirements-driven, technology development

An interesting development



We recently added the OFW WG as a new technical working group

An interesting development



Technical Advisory Council

- OFA's technology incubator
- observe trends in technology
- clearing house for new ideas
- spawn new development efforts

The OFA has really become a technology development organization

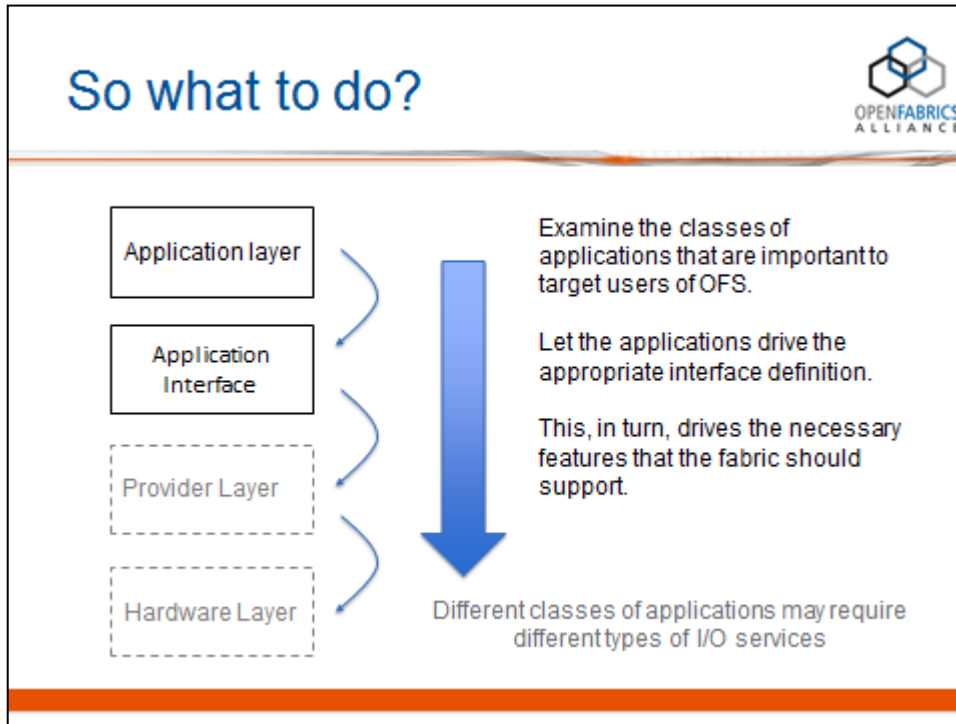
OFx WG? Multiple APIs?

- Why?
 - the consumer community demanded them, and
 - a group of members put up the resources
 - the OFA doesn't per se 'adjudicate'
- Different? Definitely!
 - one is chartered to extend verbs; the other is not constrained to verbs
 - one is based on IB-style RDMA networks, the other is transport agnostic
- Learn more!
 - many sessions on both OFI and OFV

Multiple APIs?

- Consider participating in either or both
 - subscribe to mailing lists for either group from the OFA website
- OFI WG
 - OFI WG – meets weekly
 - Data Storage/Data Access WG – meets weekly
- OFV WG – meets weekly
- All are welcome to attend
 - both are open source
 - does not require OFA membership to attend
 - even though we think you should join anyway

A key principle of the OFA



What are the central requirements of consumers of a network API?

“Application-centric I/O” is the art and science of defining an I/O architecture to maximize application effectiveness”

Consumer orientation has emerged as a key watchword for the OFA

Key technologies

- Multiple sessions on non-volatile memory and memory hierarchy
 - NVMe, NVMe over fabrics,
 - NVM programming model
- SoCs
 - as a consumer of OFA APIs,
 - as a platform supporting RDMA enabled applications
- National Labs
 - National Labs Forum (today)
 - sessions from Oakridge and Lawrence Livermore

- Re-convene on Wednesday for a direction check and to plot the OFA's course for the next year
- Meanwhile, enjoy the sessions. There's something here for everyone.



Thank You



[#OFADevWorkshop](https://twitter.com/OFADevWorkshop)